



BP HARDING DERRICK INSPECTION GUIDE



BP HARDING DERRICK INSPECTION GUIDE

CONTENTS

DERRICK ZONES

WEEKLY DERRICK INSPECTIONS

Area 1 - Crown & Water Table

Photo References

Area 2 - Monkeyboard

Photo References

Area 3 - Travelling Equipment

Photo References

Area 4 - Drillfloor & Mezzanine Deck

Photo References

Area 5 - BOP Deck & Lower Substructure

Photo References

DERRICK INSPECTION PERFORMANCE REPORT

DRILLING DERRICK INVENTORY

AREA 1

Crown and Water table

Anemometer
Crown Sheave and Pins
Watertable Snatch Blocks
Lighting

AREA 2

Monkeyboard

Bridge Racker, Standlift Cylinder and Drag Chain
Racking Boards and Air Winch
Top Drive Blower Assembly
Derrick Structure, Including:
Derrickman's Cabin
Lighting
Proximity Switches
Ladders, Handrailing and Grating

AREA 3

Travelling Equipment

Travelling Block
Top Drive and Pipehandler
Retractable Dolly Assembly
Rotary Hoses
Cementing Head
Wireline Equipment
Casing Equipment

AREA 4

Drillfloor and Mezz. Deck

Lower Racking Arm
Iron Roughneck
Stabbing Board
Elevators
Mezzanine Storage Area
Vee Door, Cylinders and Rollers

AREA 5

Lower Substructure and BOP Deck

Lower Substructure
Drawworks Cooling Package
BOP Crane
BOP Stacks



HARDING
9/23b





WEEKLY DERRICK INSPECTION

AREA 1 - CROWN & WATER TABLE

Equipment	Drawing Ref.	✓/✗	Initial	Comments/Non-Conformance
Windwall				
1. Visually inspect windwall panels for cracks, damage or looseness. Check fasteners are in place.				
Crown Block				
1. Check holding down arrgmt on crown assembly & fastline sheave. 2. Check security of sheave line guards. 3. Remove excessive tar from sheave clusters. 4. Check that all snatch block shackle securing devices are in place. 5. Check that all crown and watertable platforms are secure and clear of loose items. 6. Check all grating clips and tie wraps are secure. 7. Check all crown lighting fixtures are secure.	MOS Drgs: CTOO-DA1-019 CTOO-DA1-1267			
Anemometer				
1. Check all fasteners on anemometer brackets are secure.				

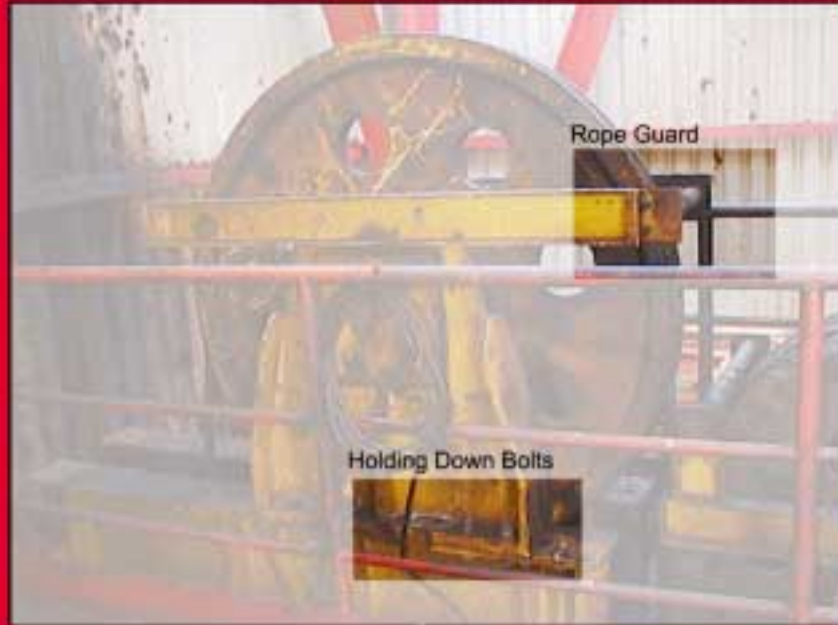
.....SignatureDate

.....Rig Supt.Date



WEEKLY DERRICK INSPECTION

AREA 1





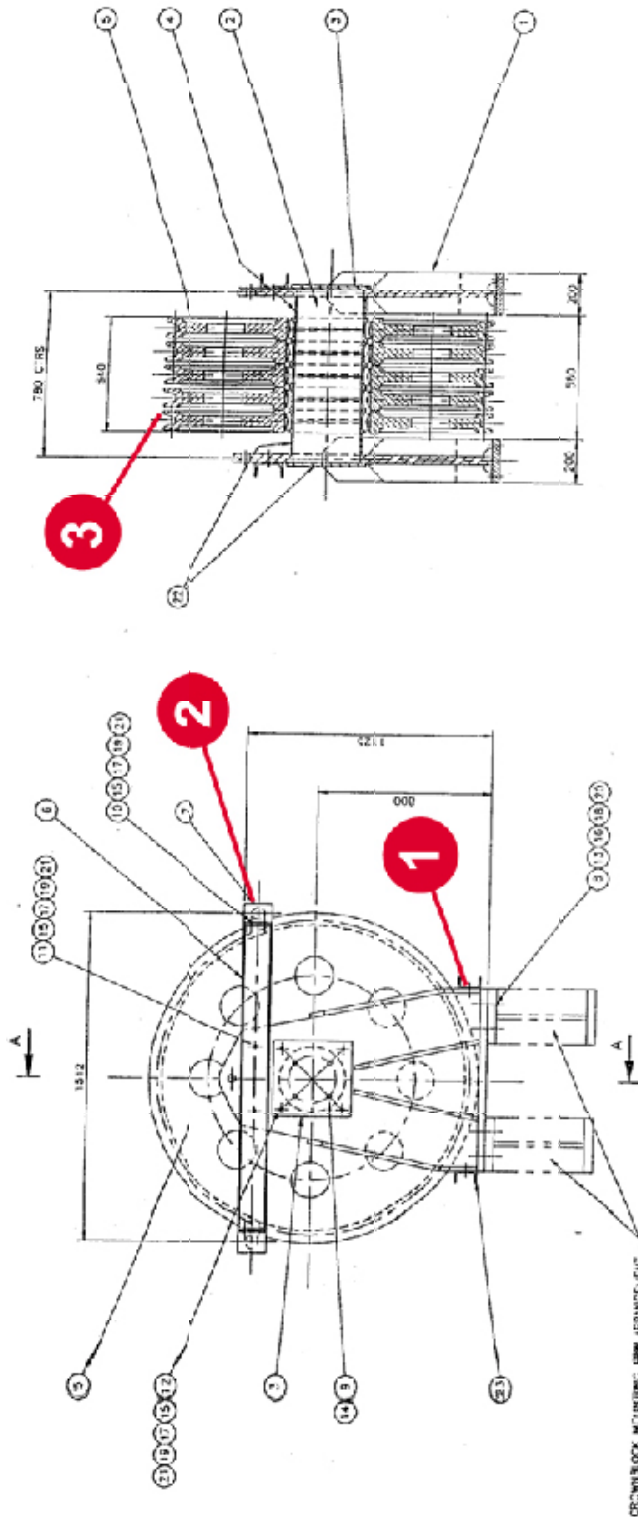
WEEKLY DERRICK INSPECTION

AREA 1





WEEKLY DERRICK INSPECTION



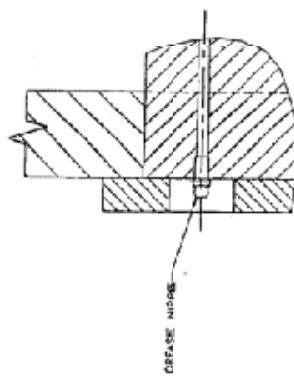
CROWNBLOCK MOUNTING BRW ARRANGEMENT
REF DWG 0200-001-012

SECTIONAL VIEW A-A

CROWNBLOCK SHEAVE ARRANGEMENT

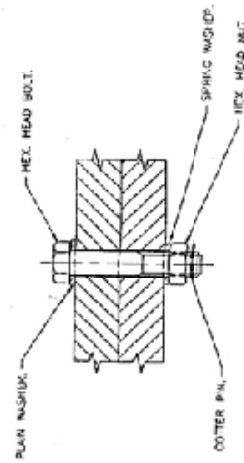
NOTE

ASSEMBLY TO BE GRASSED PRIOR TO SHIPPING.



VIEW SHOWING GREASE NIPPLE IN PLACE.

PLAN NUTS.



TYPICAL BOLTING DETAIL.

TOTAL WEIGHT = 4757 Kg

ITEM	DESCRIPTION	QTY	UNIT	REMARKS
1	16 CHAIN	1	MT	
2	16 CHAIN	1	MT	
3	16 CHAIN	1	MT	
4	16 CHAIN	1	MT	
5	16 CHAIN	1	MT	
6	16 CHAIN	1	MT	
7	16 CHAIN	1	MT	
8	16 CHAIN	1	MT	
9	16 CHAIN	1	MT	
10	16 CHAIN	1	MT	
11	16 CHAIN	1	MT	
12	16 CHAIN	1	MT	
13	16 CHAIN	1	MT	
14	16 CHAIN	1	MT	
15	16 CHAIN	1	MT	
16	16 CHAIN	1	MT	
17	16 CHAIN	1	MT	
18	16 CHAIN	1	MT	
19	16 CHAIN	1	MT	
20	16 CHAIN	1	MT	
21	16 CHAIN	1	MT	
22	16 CHAIN	1	MT	
23	16 CHAIN	1	MT	

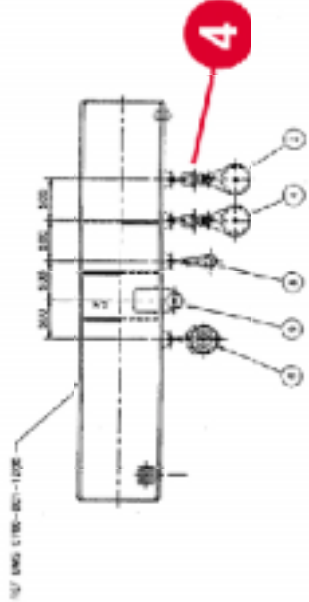
REVISION	DATE	BY	DESCRIPTION
REVISION A			
REVISION B			
REVISION C			
REVISION D			

UNION
B.P. FORTH
DERRICK PACKAGE
CROWNBLOCK ASSEMBLY
DWG-DAT-0191 of 11

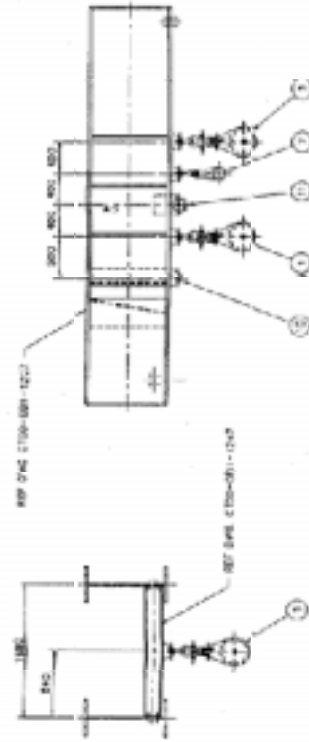


WEEKLY DERRICK INSPECTION

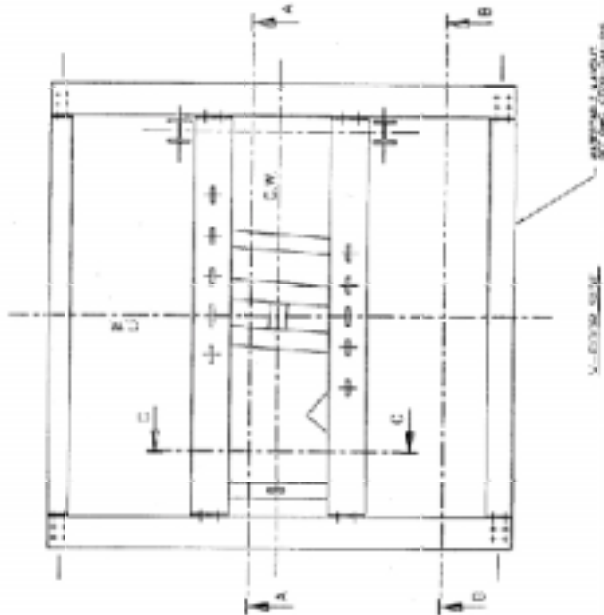
NEXT DWG	CTD3-D41-82.34
	CTD3-D41-12.26



SECTION A-A'



SECTION B-B'



SECTION C-C'

ITEM	UNIT	COMMENTS	DESCRIPTION	PART NO.	REMARKS
1	4.5T WIND 1 800-1000	WIND 1 800-1000	1.5 TONNE WIND 1.5 TONNE WIND 1.5 TONNE WIND	CTD3-D41-1026	
2	4.5T WIND 2 800-1000	WIND 2 800-1000	1.5 TONNE WIND 1.5 TONNE WIND 1.5 TONNE WIND	CTD3-D41-1026	
3	1.5T WIND 3 800-1000	WIND 3 800-1000	1.5 TONNE WIND 1.5 TONNE WIND 1.5 TONNE WIND	CTD3-D41-1026	
4	1.5T WIND 4 800-1000	WIND 4 800-1000	1.5 TONNE WIND 1.5 TONNE WIND 1.5 TONNE WIND	CTD3-D41-1026	
5	5T WIND 5 800-1000	WIND 5 800-1000	1.5 TONNE WIND 1.5 TONNE WIND 1.5 TONNE WIND	CTD3-D41-1026	
6	WIND 6 800-1000	WIND 6 800-1000	1.5 TONNE WIND 1.5 TONNE WIND 1.5 TONNE WIND	CTD3-D41-1026	
7	WIND 7 800-1000	WIND 7 800-1000	1.5 TONNE WIND 1.5 TONNE WIND 1.5 TONNE WIND	CTD3-D41-1026	
8	WIND 8 800-1000	WIND 8 800-1000	1.5 TONNE WIND 1.5 TONNE WIND 1.5 TONNE WIND	CTD3-D41-1026	
9	WIND 9 800-1000	WIND 9 800-1000	1.5 TONNE WIND 1.5 TONNE WIND 1.5 TONNE WIND	CTD3-D41-1026	
10	WIND 10 800-1000	WIND 10 800-1000	1.5 TONNE WIND 1.5 TONNE WIND 1.5 TONNE WIND	CTD3-D41-1026	
11	WIND 11 800-1000	WIND 11 800-1000	1.5 TONNE WIND 1.5 TONNE WIND 1.5 TONNE WIND	CTD3-D41-1026	

DATE	10/10/2023	TIME	10:00	BY	JOHN DOE
NO.	1001	REMARKS	DERRICK INSPECTION		
1					
2					
3					
4					
5					
6					
7					
8					
9					
10					
11					



WEEKLY DERRICK INSPECTION

AREA 2 - MONKEYBOARD

Equipment	Drawing Ref:	<input checked="" type="checkbox"/>	Initial	Comments/Non-Conformance
Bridge Racker				
<u>Bridge Racker</u> 1. Check fastenings on traverse motor and bracket. 2. Visually check fastenings on slew motor 3. Check fastenings on long travel cylinders 4. Check fasteners on wire guide 5. Check roller assemblies on racker head 6. Check fasteners on claw assembly and claw motor 7. Check springs on anti-fall device. <u>Standlift Cylinder</u> 1. Visually inspect fasteners on mountingbrackets 2. Visually inspect fasteners on supportbracket and sheave 3. Check hoist wire and swivels <u>Drag Chain</u> 1. Check tie rod fasteners and seizing wire 2. Check fasteners on troughs.	MH Drgs: MH 1946-81 MH 1943-03 MOS Drg: CTOO-DA1-210 MOS Drg: CTOO-DA1-200			
Racking Boards				
<u>Monkeyboard</u> 1. Check condition of derrickmans belt. <u>Racking Boards</u> 1. Check fasteners, pins and safety wires on drillpipe latches. 2. Check fasteners, pins and safety wires on drill collar latches 3. Check pins, cotters and safety wire on kick flap <u>Air Winch</u> 1. Check winch holding down bolts 2. Check wire rope, chain shackle and hook	SM62930 MOS Drg: CTOO-DA1-1031			
Top Drive Blower Assembly				
1. Check blower assy foundation fasteners 2. Ensure all safety devices are secure on hose suspension arrangement.				
Derrick Structure				
1. Check fastenings on ladders, back scratchers and platform gratings 2. Remove or secure loose items on platforms, walkways & Derrickman's Cabin 3. Visually check fasteners on derrick light fixtures and cameras. 4. Visually check fasteners on clash avoidance proximity switches. 5. Visually check fasteners on derrick hydraulic, degasser & standpipe pipework 6. Visually check fasteners on tong counter-weight frame.	NA			
Windwall				
1. Visually inspect windwall panels for cracks, damage or looseness. Check fasteners are in place. 2. Check derrickman's escape door for damage and ensure hinges are free.	N/A			

.....SignatureDate

.....Rig Supt.Date



WEEKLY DERRICK INSPECTION

AREA 2





WEEKLY DERRICK INSPECTION

AREA 2





WEEKLY DERRICK INSPECTION

AREA 2





WEEKLY DERRICK INSPECTION

AREA 2

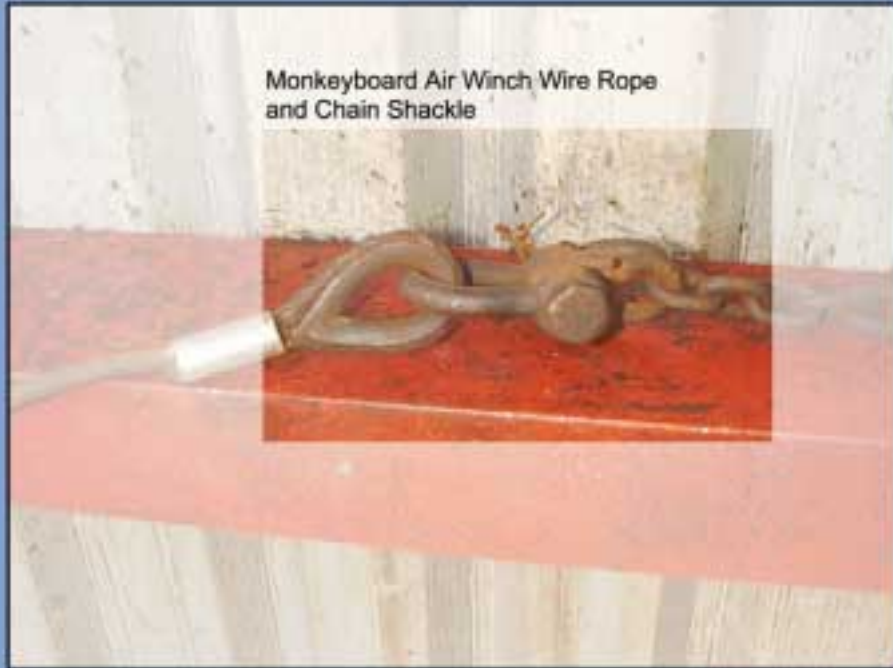




WEEKLY DERRICK INSPECTION

AREA 2

Monkeyboard Air Winch Wire Rope
and Chain Shackle



Monkeyboard Air Winch - Hook





WEEKLY DERRICK INSPECTION

AREA 3 - TRAVELLING EQUIPMENT

Equipment	Drawing Ref:	<input checked="" type="checkbox"/> Initial	Comments/Non-Conformance
Travelling Block			
1. Check side plate fasteners 2. Check integrity of locking device on clevis. 3. Check security of hang-off line shackle pin.	National Drg: RA 1562-18		
Top Drive & Pipehandler			
Top Drive 1. Check locking arrgmt on compensator cylinder shackles. 2. Check safety chains & shackles on service loops. 3. Check safety sling on lub.oil pump. Pipehandler 1. Check link hanger supports 2. Check link block bolts 3. Check IBOP cylinder clevis 4. Check IBOP actuating rollers 5. Check IBOP sleeve & crank assy. 6. Check torque wrench guide rods & pins 7. Check guide rod clamps 8. Check torque wrench cyl. end plate fasteners 9. Check centralising spring safety wires 10. Check lower bell guide bolts & safety sling 11. Check torque wrench clamp bolts	MH Drg: MH 1797-51 MH Drg: MH 1717-13		
Retractable Dolly Assembly			
1. Check dolly side rollers & axles 2. Check bogie wheels & keeper plates 3. Check dolly arm attachments 4. Check dolly position sensor brackets	MH Drg: MH 1745-06		
Rotary Hoses			
1. Check clamp bolts 2. Check safety chains and shackles 3. Check security of lifting clamp	Beattie Drawings		
Cementing Head			
1. Check lifting bridle shackles. Ensure cotter pins are in place. 2. Check lock pin arrgmt is secure.	NA		
Wireline Equipment			
1. Check SDC sheave is locked by castle nut c/w split pin. 2. Check SDC shackles and lifting spade are suitably locked off with Tywraps.	NA		
Casing Equipment			
1. Check fasteners, slings and shackles on the following tubular handling eqpmt: 1. Loadmaster 2. Single Joint Elevators 3. Side Door Elevators 4. HYC & YC Elevators 5. 350 ton & 500 ton Varco Elevators 6. Spring Hanger and Lift Cylinder 2. Check fasteners on casing spinner are secure and suitably locked off			

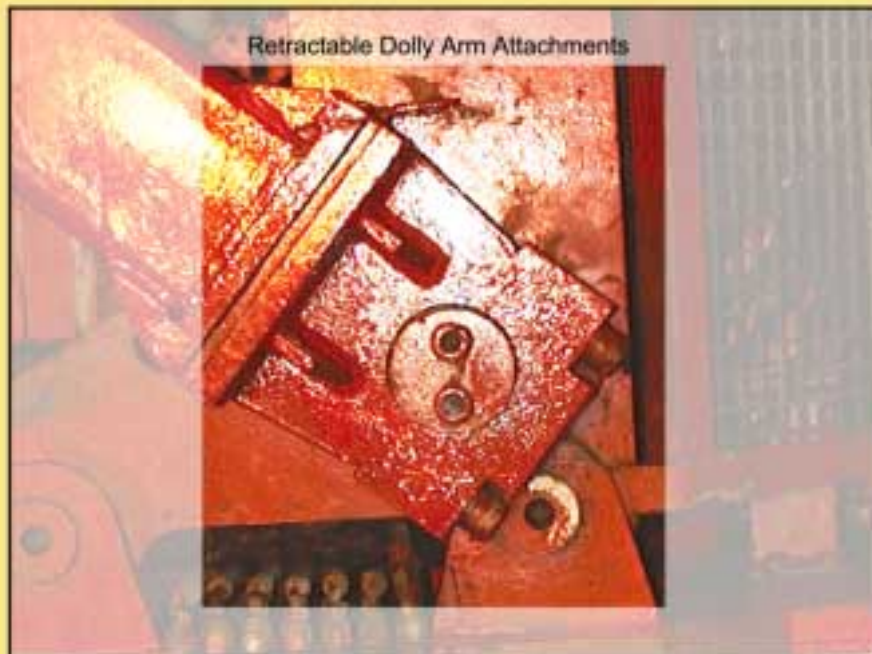
.....SignatureDate

.....Rig Supt.Date



WEEKLY DERRICK INSPECTION

AREA 3





WEEKLY DERRICK INSPECTION

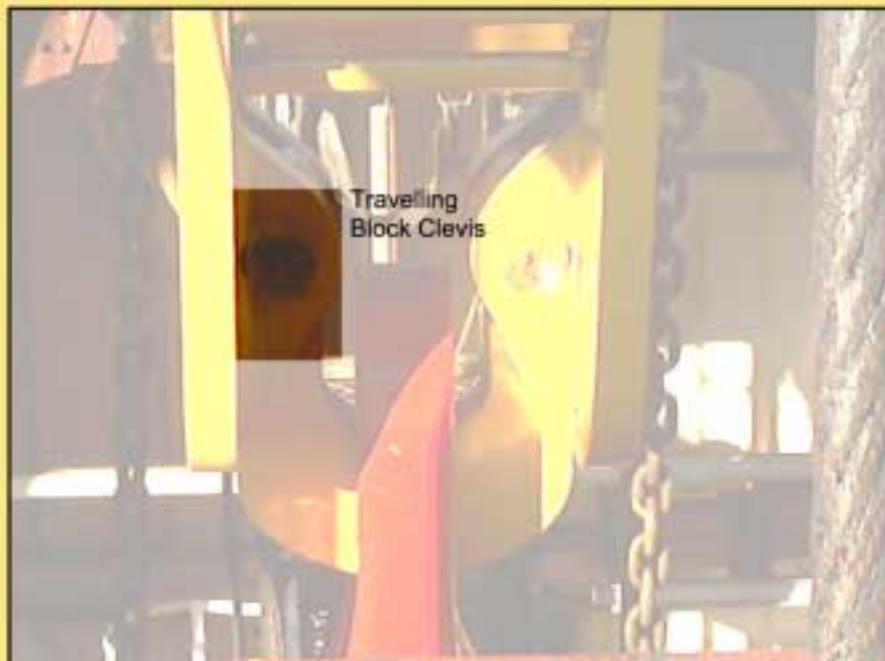
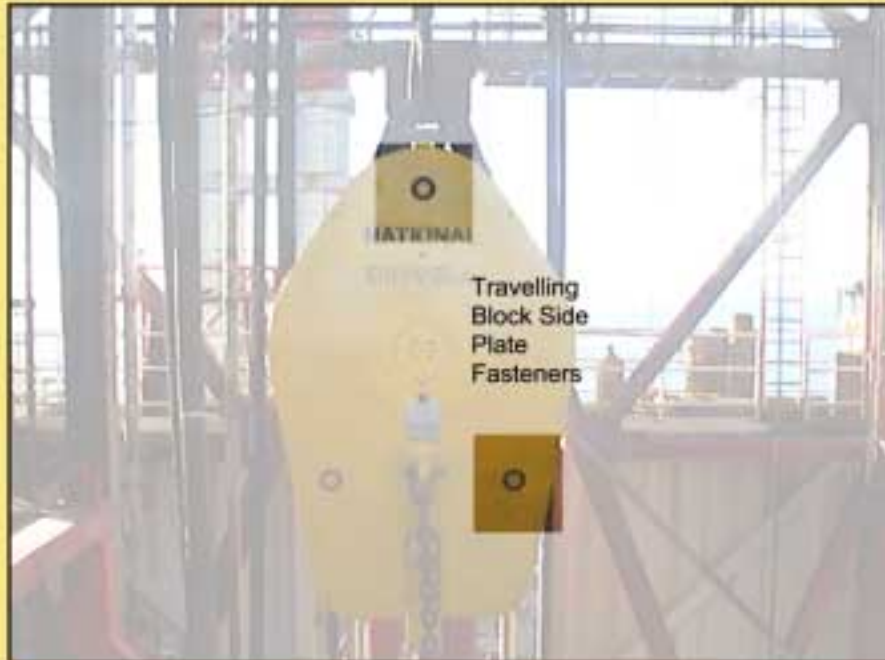
AREA 3





WEEKLY DERRICK INSPECTION

AREA 3





WEEKLY DERRICK INSPECTION

AREA 3





WEEKLY DERRICK INSPECTION

AREA 3





WEEKLY DERRICK INSPECTION

AREA 4 - DRILLFLOOR & MEZZANINE DECK

Equipment	Drawing Ref.	<input checked="" type="checkbox"/>	Initial	Comments/Non-Conformance
Lower Racking Arm				
Check fastening arrangements on: 1. Slew Bearing Housing 2. Hydraulic Manifold 3. Hose Reel Assembly 4. Telescopic Arm Roller Assemblies 5. Gripper Head & Pins 6. Gripper Head Hydraulic Motor	MOS Drg: CTOO-DA1-420			
Iron Roughneck				
Check fastening arrangements on: 1. Spinner Head Frame 2. Spinner Head Motors 3. Spinner Head Rollers 4. Hose Guide Arm Assembly 5. Torque Wrench Jaws	Maritime Hydraulics Drg: MH 1895-07			
Stabbing Board				
Check security of access ladder and back scratcher. Check guide rail supports and end stops. Check air winch foundations and rope guard. Check mounting plate and shackle arrangement on 2ary fall arrestor. Check hang-off arrangement on inertia reel and line is retracted. Check air filter/gauge supports. Check condition of safety harness. On the stabbing platform, check fastenings on the following: 1. Carriage. 2. Carriage wheels and rollers. 3. Carriage safety bar. 4. Attachment of hoist cable & secondary fall arrestor. 5. Platform locking device. 6. Platform hinge pistons. 7. Platform handrails. 8. Kick plate piston. 9. Foot pump assembly	MOS Drg: CTOO-DA1-500			
Elevators				
Check fasteners and hinge pins on all elevators, particularly: <u>Manual Elevators</u> 1. Link block bolt arrangements. 2. Underside retaining bolts <u>Automatic Elevators</u> 1. Link block bolt arrangement. 2. Underside retaining bolts. 3. Trigger link assembly. 4. Trigger locking pin. 5. Rear frame. 6. Closure spring tension nut.	Varco Parts List for MGG, GG & HGG Elevators - Note, double nut & cotter - Note, double nut & cotter.			
Drillfloor Area				
1. Check that all items on Mezz. level are securely stored and restrained by rope as required. 2. Visually inspect windwall panels for cracks, damage or looseness. Check fasteners are in place. 3. Check condition of manriding belts. 4. Check security of patio deck air hoist, chain bucket, beam trolley.	NA			
Vee Door				
Check fasteners on North & South sections: 1. Mounting Bracket 2. Cylinder rod clevis. 3. Roller Assemblies. 4. Check fasteners on 'A' frame roller	MOS Drg: CXOO-DA1-006			

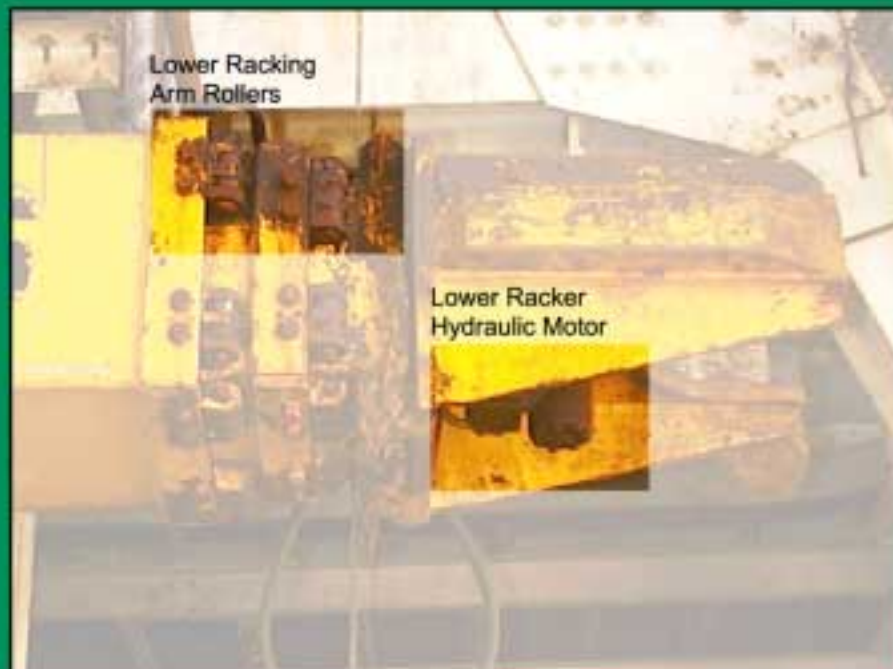
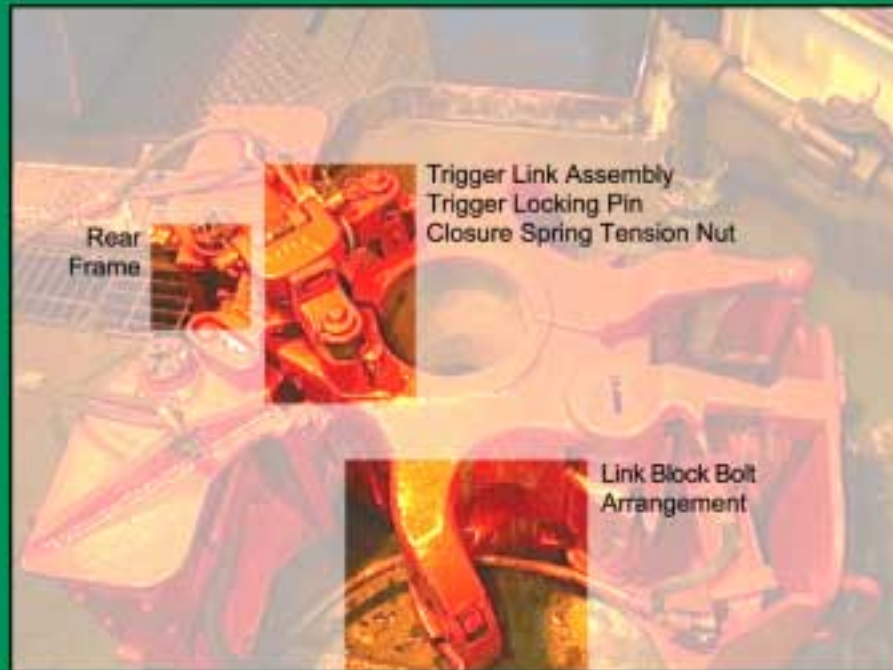
.....SignatureDate

.....Rig Supt.Date



WEEKLY DERRICK INSPECTION

AREA 4



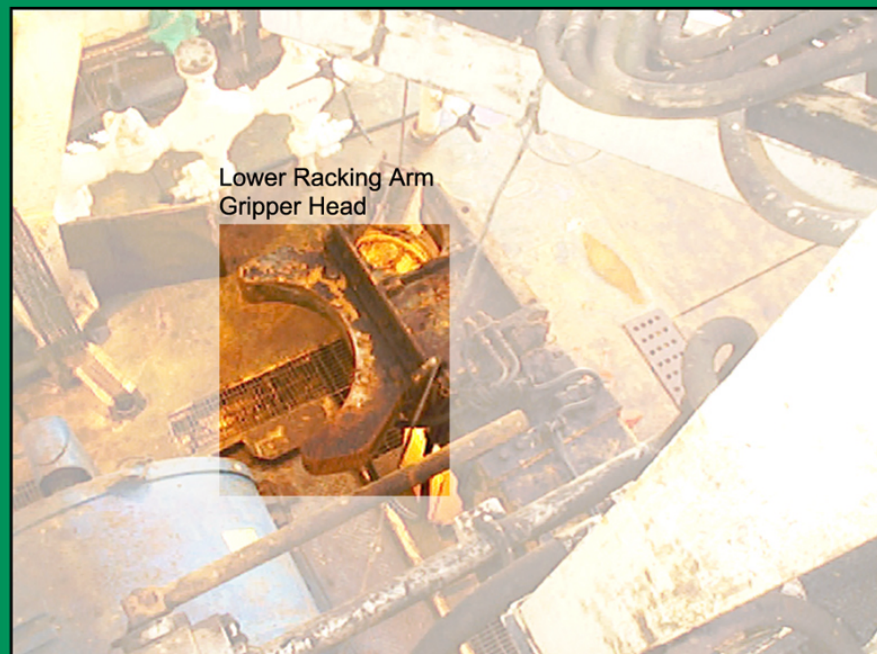
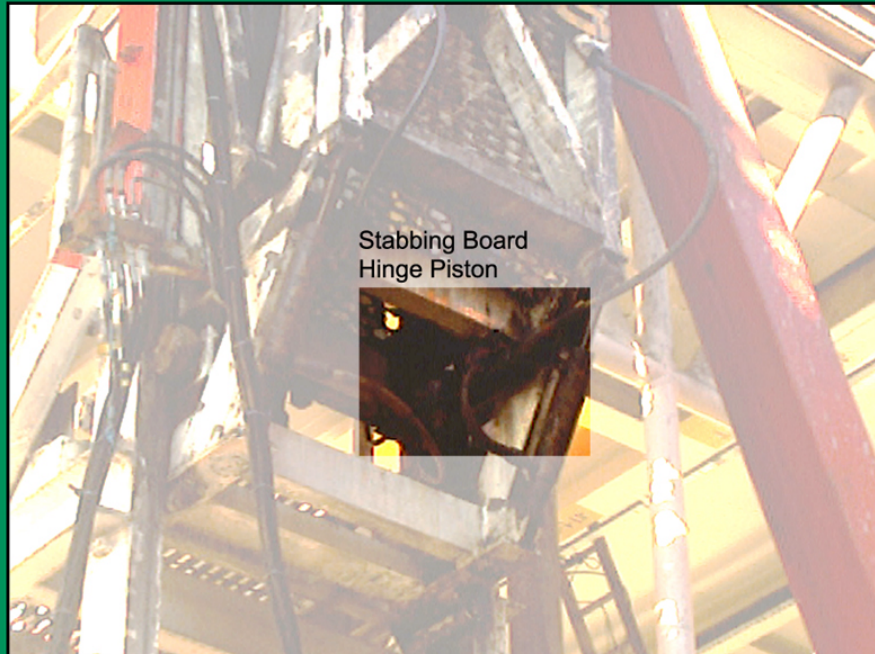


WEEKLY DERRICK INSPECTION

AREA 4



AREA 4





WEEKLY DERRICK INSPECTION

AREA 4





WEEKLY DERRICK INSPECTION

AREA 5 - BOP DECK AND LOWER SUBSTRUCTURE

Equipment	Drawing Ref.	✓/✗	Initial	Comments/Non-Conformance
Lower Substructure				
1. Check all platform areas are secure and clear of loose objects. 2. Ensure all grating clips and tie wraps are secure. 3. Check chain guards on access ladders are secure. 4. Check drip pans for foreign objects likely to cause overflow. 5. Check around mouseholes for loose objects. 6. Check fasteners on diverter lines and support rollers. 7. Check shackles and anchor chain on Atlas Wireline Unit under rig floor. <u>Drawworks Cooling Package:</u> 1. Check pump/motor holding down arrgmt. 2. Check fastenings on heat exchanger and monorail.	Baylor Company Drg. Brake Water Cooling System.			
BOP Deck				
1. Ensure control pendant is stored safely. 2. From crane maintenance platform, visually check cranes and beams for loose items. 3. Visually check catenary for loose or damaged hangers/cables. 4. Check shackles are removed when crane not in use. <u>BOP Stacks</u> 1. Check BOP lifting frame for loose items. 2. Check chains and shackles on choke & kill lines.				

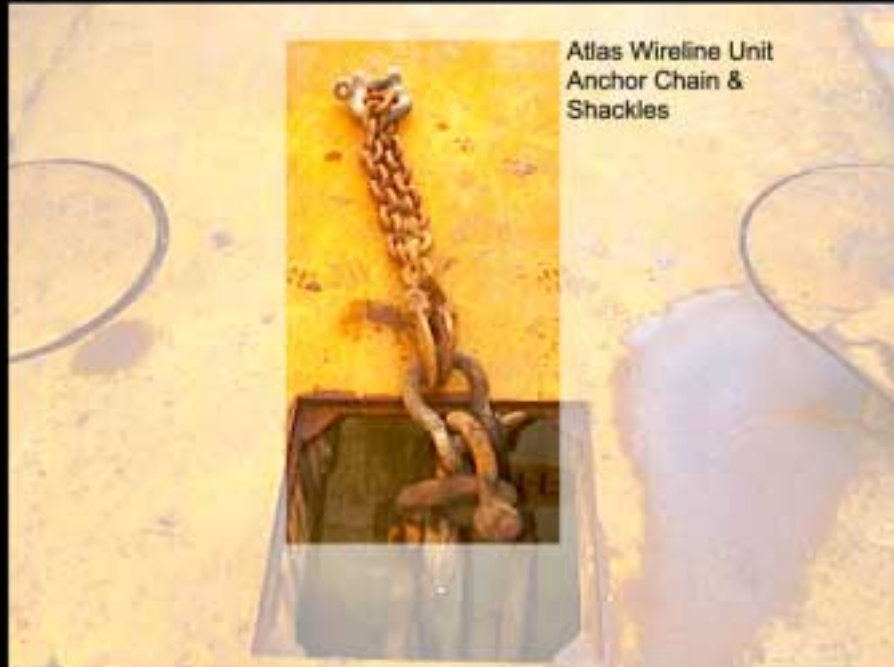
.....SignatureDate

.....Rig Supt.Date



WEEKLY DERRICK INSPECTION

AREA 5





WEEKLY DERRICK INSPECTION

AREA 5





DERRICK INSPECTION PERFORMANCE REPORT

The factors shown in the penultimate columns are representative of the total number of checks identified on the Weekly Derrick Inspection sheets for the respective derrick areas. The actual number of checks carried out multiplied by the factor will provide the optimum points score for the area. Points are deducted from the optimum figure as follows to arrive at the total score for the area:

- For each Dropped or Missing Object 50 points
- For each Outstanding Non-Conformance 20 points
- For each Insecure Item Found 10 points

The Rig Superintendent is responsible for completing this report and for forwarding to the Rig Manager on a Weekly basis.

Area 1 – Crown and Watertable					
	Crown		Anemometer		Score
No. Items Inspected per Check Sheet		+			
No. Dropped or Missing Objects		+			
No. Outstanding Non-Conformances		+		÷9 x 100	
No. Insecure Items Recorded		+			
				Total	

Area 2 - Monkeyboard									
	Bridge Racker		Racking Boards		TD Blower Assy		Derrick		Score
No.Items Inspected per Check Sheet		+		+		+			
No. Dropped or Missing Objects		+		+		+			
No. Outstanding Non-Conformances		+		+		+		+28 x 100	
No. Insecure Items Recorded		+		+		+			
								Total	

Area 3 – Travelling Equipment															
	T.Blk		TD		Dolly		Hoses		Cmnt		W/Ln		Csng		Score
No.Items Inspected per Check Sheet		+		+		+		+		+		+			
No.Dropped or Missing Objects		+		+		+		+		+		+			
No. Outstanding Non-Conformances		+		+		+		+		+		+		+35 x 100	
No.Insecure Items Recorded		+		+		+		+		+		+			
														Total	

Area 4 – Drillfloor & Mezzanine Level													
	L.Racker		IR		Stab Bd		Elevators		Mezz.Store		V.Door		Score
No.Items Inspected per Check Sheet		+		+		+		+		+			
No.Dropped or Missing Objects		+		+		+		+					
No.Outstanding Non-Conformances		+		+		+		+		+		+41 x 100	
No.Insecure Items Recorded		+		+		+		+		+			
												Total	

Area 5 – BOP Deck & Lower Substructure					
	Lower Substructure		BOP Deck		Score
No. Items Inspected per Check Sheet		+			
No. Dropped or Missing Objects		+			
No. Outstanding Non-Conformances		+		÷15 x 100	
No. Insecure Items Recorded		+			
				Total	

.....Rig Supt. / / Date



DERRICK INVENTORY

BP FORTIES DELTA FD DDO INVENTORY

Area 1 : Crown to Monkeyboard Windwall			
1.44 Bracket 1/4" ventline	U-bolled	Low	Weekly Inspection
1.45 Bracket 1/4" ventline	U-bolled	Low	Weekly Inspection
1.46 Bracket 1/4" ventline	U-bolled	Low	Weekly Inspection
1.47 Bracket 1/4" ventline	U-bolled	Low	Weekly Inspection
1.48 Bracket 1/4" ventline	U-bolled	Low	Weekly Inspection
1.49 Bracket 1/4" ventline	U-bolled	Low	Weekly Inspection
1.50 Bracket 1/4" ventline	U-bolled	Low	Weekly Inspection
1.51 Bracket 1/12" ventline	U-bolled	Low	Weekly Inspection
1.52 Bracket 1/10" ventline	U-bolled	Low	Weekly Inspection
1.53 Bracket 1/10" ventline	U-bolled	Low	Weekly Inspection
1.54 Access Platform	U-bolled	Low	Weekly Inspection
1.55 Redundant Light Bracket	Bolled to Uni-strut	Low	Weekly Inspection
1.56 6" Cable Tray	Bolled	Low	Weekly Inspection
1.57 Junction Box - Hawke	Bolled	Low	Monthly PM
1.58 Inertia Reel & Safety Sling	Shackle & safety sling	Low	Weekly Inspection
1.59 Junction Box - Hawke	Bolled	Low	Monthly PM
1.60 Junction Box - Hawke	Bolled	Low	Monthly PM
1.61 Padeye Box Beam	Bolled	Low	Weekly Inspection

Area 2 : Monkeyboard Level			
2.1 Fire Extinguisher Box	REMOVED		
2.2 L-shaped Angle Braces	Bolled	Low	Weekly Inspection
2.3 L-shaped Angle Braces	Bolled	Low	Weekly Inspection
2.4 Halogen Light - Philips	Bolled to Uni-strut	Low	Monthly PM
2.5 Junction Box - Hawke	Bolled	Low	Monthly PM
2.6 Junction Box - Hawke	Bolled	Low	Monthly PM
2.7 Junction Box - Hawke	Bolled	Low	Monthly PM
2.8 Junction Box - Hawke	Bolled	Low	Monthly PM
2.9 Light Switch - BBC	Bolled	Low	Monthly PM
2.10 Back Scratcher Braces (3 of)	Bolled	Low	Monthly PM
2.11 Monkeyboard access level cover	Welded brackets	Med	Weekly Inspection
2.12 Cont. Walkway & handrail	Bolled	Low	Weekly Inspection
2.13 6" Cable Tray	Bolled	Low	Weekly Inspection
2.14 Halogen Light	Bolled / Safety Sling	Low	Monthly PM
2.15 Halogen Light	Bolled / Safety Sling	Low	Monthly PM
2.16 Control box halogen light	Bolled	Low	Monthly PM
2.17 Control box halogen light	Bolled	Low	Monthly PM
2.18 Junction Box - Hawke	Bolled	Low	Monthly PM
2.19 Junction Box - Hawke	Bolled	Low	Monthly PM
2.20 L-shaped angle brace	Bolled / Clamped	Low	Weekly inspection
2.21 L-shaped angle brace	Bolled / Clamped	Low	Weekly inspection
2.22 Strip light inspection cover	Hinged	Low	Weekly inspection
2.23 Strip light inspection cover	Hinged	Low	Weekly inspection
2.24 6" cable tray	Bolled	Low	Weekly Inspection
2.25 Junction Box - Hawke	Bolled	Low	Monthly PM
2.26 Junction Box - Hawke	Bolled	Low	Monthly PM
2.27 4" Cable Tray	Bolled	Low	Weekly Inspection
2.28 5" WORM BAR	Bolled	Low	Weekly Inspection



DERRICK INVENTORY

BP FORTIES DELTA FD 000 INVENTORY

Forties Delta		Derrick Dropped Objects Inventory	
Equipment / Area	Fastening Method	Risk	Control
Area 1 : Upper Crown			
1.1 Aircraft Warning Light	Bolted	Low	Monthly PM
1.2 Padeye Beam	Bolted	Low	Monthly PM
1.3 8" Cable Tray	Bolted	Low	Weekly Inspection
1.4 Junction Box - Hawke	Bolted to Uni-strut	Low	Monthly PM
1.5 Access Ladder / Backscratcher	Bolted	Low	Monthly PM
1.6 Antenna & cable	Clamped	Low	Weekly Inspection
1.7 Walkway / Handrail	Bolted	Low	Monthly PM
1.8 6" cable tray top of A frame.	Clamped	Low	Weekly Inspection
Area 1 : Crown Platform (Lower)			
1.9 6" Cable Tray	Bolted	Low	Weekly Inspection
1.10 Junction Box - Hawke	Bolted	Low	Monthly PM
1.11 Aircraft Light - Trolox	Bolted	Low	Monthly PM
1.12 Aircraft Light - Trolox	Bolted	Low	Monthly PM
1.13 Access hatch cover	Hinged / welded	Low	Weekly Inspection
1.14 6" Cable Tray	Bolted	Low	Weekly Inspection
1.15 Junction Box - Hawke	Bolted	Low	Monthly PM
1.16 Crown Block Sheave Assy.	Bolted	Low	Monthly PM
1.17 Fast Line Sheave	Bolted	Low	Monthly PM
1.18 Dead Line Sheave	Bolted	Low	Monthly PM
1.19 10" Degasser Vent Line	U-bolted	Low	Weekly Inspection
1.20 Electrical box ?	Lying on walkway	Med	Weekly Inspection
1.21 Electrical box?	Lying on walkway	Med	Weekly Inspection
1.22 Strip Light - Victor	Bolted / Safety Sling	Low	Monthly PM
1.23 Strip Light - Victor	Bolted / Safety Sling	Low	Monthly PM
1.24 6" Cable Tray	Bolted	Low	Weekly Inspection
1.25 Junction Box - Hawke	Bolted	Low	Monthly PM
1.26 Sheave access platform	Bolted / Clamped	Low	Weekly Inspection
1.27 Sheave access platform	Bolted / Clamped	Low	Weekly Inspection
1.28 Cont. walkway & handrails	Bolted	Low	Weekly Inspection
1.29 Sheave block	Shackled / Safety Sling	Low	Monthly PM
1.30 Sheave Block	Shackled / Safety Sling	Low	Monthly PM
1.31 Padeye Bracket	Welded	Low	SI1018
1.32 Sheave Block	Shackled / Safety Sling	Low	Monthly PM
1.33 Block hangoff line	Shackled / Safety Sling	Low	Monthly PM
1.34 Sheave Block	Shackled / Safety Sling	Low	Monthly PM
1.35 Sheave Block	Shackled / Safety Sling	Low	Monthly PM
1.36 Sheave mounted on Crown Block	Welded & bolted	Low	Monthly PM
1.37 Sheave mounted on Crown Block	Welded & bolted	Low	Monthly PM
1.38 6" Cable Tray	Bolted	Low	Weekly Inspection
1.39 6" Cable Tray Section	Bolted to Uni-strut	Low	Weekly Inspection
1.40 Junction Box - Hawke	Bolted	Low	Monthly PM
1.41 5" Ventline bracket	U-bolted	Low	Weekly Inspection
1.42 Channel bracket	Bolted	Low	Weekly Inspection
1.43 Fastline sensor on frame	bolted	Low	Monthly PM



DERRICK INVENTORY

BP FORTIES DELTA FD DDO INVENTORY

Area 2 : Monkeyboard Level			
2.28 L-shaped angle brace	Bolted / Clamped	Low	Weekly Inspection
2.30 L-shaped angle brace	Bolted / Clamped	Low	Weekly Inspection
2.31 8" Cable tray	Bolted	Low	Weekly Inspection
2.32 Junction Box - Hawke	Bolted	Low	Monthly PM
2.33 Junction Box - Hawke	Bolted	Low	Monthly PM
2.34 4" Cable Tray	Bolted	Low	Weekly Inspection
2.35 Strip light inspection cover	Hinged	Low	Weekly Inspection
2.36 Strip light inspection cover	Hinged	Low	Weekly Inspection
2.37 Halogen light - Chalmil	Bolted / Safety Sling	Low	Monthly PM
2.38 Halogen light - Chalmil	Bolted / Safety Sling	Low	Monthly PM
2.39 Control box halogen light	Bolted	Low	Monthly PM
2.40 Junction box - Hawke	Bolted	Low	Monthly PM
2.41 Junction Box - Hawke	Bolted	Low	Monthly PM
2.42 Halogen light switch	Bolted	Low	Monthly PM
2.43 Strip light inspection cover	Hinged	Low	Weekly Inspection
2.44 Strip light inspection cover	Hinged	Low	Weekly Inspection
2.45 Derrickman's escape line / frame	Bolted & clamped	Low	Monthly PM
2.46 Control descent device		Low	Weekly Inspection
2.47 Junction Box - Hawke	Bolted	Low	Monthly PM
2.48 Junction Box - Hawke	Bolted	Low	Monthly PM
2.49 Halogen light - Chalmil	Bolted / Safety Sling	Low	Monthly PM
2.50 Strip light inspection cover	Hinged	Low	Weekly Inspection
2.51 Strip light inspection cover	Hinged	Low	Weekly Inspection
2.52 4" Cable Tray	Bolted	Low	Weekly Inspection
2.53 8" Cable Tray	Bolted	Low	Weekly Inspection
2.54 Air Hoist, Ext. Cont. & Lub	Bolted	Low	Monthly PM
2.55 Access Ladder & platform	Bolted	Low	Weekly Inspection
2.56 Access Ladder & platform	Bolted	Low	Weekly Inspection
2.57 Monkeyboard	Bolted	Low	Weekly Inspection
2.58 Fingerboard Assy.	Bolted	Low	Weekly Inspection
2.59 1" air supply to air hoist	Bolted	Low	Weekly Inspection
2.60 Junction Box - Hawke	Bolted	Low	Monthly PM
2.61 Speaker - BHP	Bolted	Low	Monthly PM
2.62 Junction Box - Hawke	Bolted	Low	Weekly Inspection
2.63 Strip Light & Guard	Bolted / Safety Sling	Low	Monthly PM
2.64 Strip Light & Guard	Bolted / Safety Sling	Low	Monthly PM
2.65 Strip Light & Guard	Bolted / Safety Sling	Low	Monthly PM
2.66 Strip Light & Guard	Bolted / Safety Sling	Low	Monthly PM
2.67 Strip Light & Guard	Bolted / Safety Sling	Low	Monthly PM
2.68 Strip Light & Guard	Bolted / Safety Sling	Low	Monthly PM
2.69 Hoist Sheave Guide bar	Bolted	Low	Weekly Inspection
2.70 Hoist Guide Sheave	Shackled	Low	Weekly Inspection
2.71 Hoist Guide Sheave	Shackled	Low	Weekly Inspection
2.72 Communications box - Vitavax	Bolted	Low	Weekly Inspection



DERRICK INVENTORY

BP FORTIES DELTA FD DDO INVENTORY

Area 3 : Below Monkeyboard to Top of Drill Floor Windwell			
3.1 Access Platform	U-bolts	Low	Weekly Inspection
3.2 Aircraft Light	Bolts	Low	Monthly PM
3.3 Un-wrnut brackets	Bolts	Low	Weekly Inspection
3.4 18" cable tray	Bolts / Clamped	Low	Weekly Inspection
3.5 Tong Counterbalance	Bolts / u-bolts	Med	Monthly PM
3.6 Stoppingboard Assy	Bolts / clamped / hinged	Med	Monthly PM
3.7 Airline Reel Assy	Bolts	Low	Monthly PM
3.8 Inertia reel & safety sling	Shackled / safety sling	Low	Weekly Inspection
3.9 Deadline guide/stop	U-bolts / clamped / safety sling	Low	Weekly Inspection
3.10 Fastline guide - KITE	Shackled / safety sling	Low	Monthly PM
3.11 Sheave block Wite	Shackled / safety sling	Low	Monthly PM
3.12 sheave block Wite	Shackled / safety sling	Low	Monthly PM
3.13 sheave block Wite	Shackled / safety sling	Low	Monthly PM
3.14 Tong Counterbalance	Bolts / u-bolts	Med	Monthly PM
3.15 Access ladder to stab board	Bolts	Low	Weekly Inspection
3.16 Work platform	Bolts / Safety Sling	Low	Weekly Inspection
3.17 Upper beam clamp support - w/dr	Clamped	Low	Weekly Inspection
3.18 Upper beam clamp support - w/dr	Clamped	Low	Weekly Inspection
3.19 Upper beam clamp support - w/dr	Clamped	Low	Weekly Inspection
3.20 Upper beam clamp support - w/dr	Clamped	Low	Weekly Inspection
3.21 Upper beam clamp support - w/dr	Clamped	Low	Weekly Inspection
3.22 Upper beam clamp support - w/dr	Clamped	Low	Weekly Inspection
3.23 Upper beam clamp support - w/dr	Clamped	Low	Weekly Inspection
3.24 Upper beam clamp support - w/dr	Clamped	Low	Weekly Inspection
3.25 V-door operating ram	U-clamped	Low	Monthly PM
3.26 Degasser line	U-bolts	Low	Weekly Inspection
3.27 8" vent line	U-bolts	Low	Weekly Inspection
3.28 Walkways & handrails	Bolts	Low	Weekly Inspection
3.29 Access ladder & b/sratcher	Bolts / clamped	Low	Weekly Inspection
3.30 6" Cable tray	Bolts	Low	Weekly Inspection
3.31 Junction Box - Hawke	Bolts	Low	Monthly PM
3.32 Junction Box - Hawke	Bolts	Low	Monthly PM
3.33 S/Steel Harness box	U-bolts	Low	Weekly Inspection
3.34 Sensor box - Abtech	Bolts	Low	Monthly PM
3.35 Gauge & pipework	U-bolts	Low	Weekly Inspection
3.36 SWL sign status board	Bolts	Low	Weekly Inspection
3.37 1" airline	U-bolts	Low	Weekly Inspection
3.38 Roller assy	Bolts	Low	Weekly Inspection
3.39 Roller assy	Bolts	Low	Weekly Inspection
3.40 Junction Box - Hawke	Bolts	Low	Monthly PM
3.41 Junction Box - Hawke	Bolts	Low	Monthly PM
3.42 Halogen Light - Chalmr	Bolts / Safety Sling	Low	Monthly PM
3.43 Halogen Light - Chalmr	Bolts / Safety Sling	Low	Monthly PM
3.44 Halogen Light - Chalmr	Bolts / Safety Sling	Low	Weekly Inspection
3.45 Junction Box - Hawke	Bolts	Low	Weekly Inspection
3.46 Junction Box - Hawke	Bolts	Low	Weekly Inspection
3.47 Junction Box - Hawke	Bolts	Low	Weekly Inspection
3.48 Sensor - Rosemount	Bolts	Low	Weekly Inspection
3.49 8" Cable tray	Bolts / clamped	Low	Weekly Inspection
3.50 Sensor box - Abtech	Bolts	Low	Weekly Inspection



DERRICK INVENTORY

BP FORTIES DELTA FD 000 INVENTORY

Area 4 : Top of Rig Floor Windwall to Rig Floor			
4.53 Strip Light	Bolted / Safety Sling	Low	Monthly PM
4.54 Strip Light	Bolted / Safety Sling	Low	Monthly PM
4.55 Junction Box	Bolted	Low	Monthly PM
4.56 16" Cable Tray	Bolted	Low	Weekly Inspection
4.57 Strip Light	Bolted / Safety Sling	Low	Monthly PM
4.58 Standpipe	Bolted Clamps	Low	Weekly Inspection
4.59 Standpipe	Bolted Clamps	Low	Weekly Inspection
4.60 Cmt Line	U-bolted	Low	Weekly Inspection
4.61 Strip Light	Bolted / Safety Sling	Low	Monthly PM
4.62 16" Cable Tray	Bolted	Low	Weekly Inspection
4.63 16" Cable Tray	Bolted	Low	Weekly Inspection
4.64 4" Cable Tray	Bolted	Low	Weekly Inspection
4.65 Junction Box	Bolted	Low	Monthly PM
4.66 Junction Box	Bolted	Low	Monthly PM
4.67 Junction Box	Bolted	Low	Monthly PM
4.68 Strip Light	Bolted / Safety Sling	Low	Monthly PM
4.69 Strip Light	Bolted / Safety Sling	Low	Monthly PM
4.70 Strip Light	Bolted / Safety Sling	Low	Monthly PM
4.71 Strip Light	Bolted / Safety Sling	Low	Monthly PM
4.72 Telephone Maxon	Bolted	Low	Monthly PM
4.73 Water Detector Sensor	Bolted	Low	Monthly PM
4.74 Junction Box - Dworks 5 carrier	Bolted	Low	Monthly PM
4.75 1" Airline supply	U-bolted	Low	Weekly Inspection
4.76 Sub Structure Access Cover	Shackled / sling	Low	Weekly Inspection
4.77 Sub Structure Access Cover	Shackled / sling	Low	Weekly Inspection
4.78 Sub Structure Access Cover	Shackled / sling	Low	Weekly Inspection
4.79 Sub Structure Access Cover	Shackled / sling	Low	Weekly Inspection

Area 5 : Substructure			
5.1 Frame /Elect. Catenary	Welded / bolted	Low	Weekly Inspection
5.2 6" Cable Tray	Bolted	Low	Weekly Inspection
5.3 8" Cable Tray	Bolted	Low	Weekly Inspection
5.4 8" Cable Tray	Bolted	Low	Weekly Inspection
5.5 Drill line Reel, platform & spooler	Bolted	Low	Monthly PM
5.6 Access ladder Dabava	Welded / bolted	Low	Weekly Inspection
5.7 Junction box - Hawks	Bolted	Low	Monthly PM
5.8 Strip light -Victor- 2 of	Bolted	Low	Monthly PM
5.9 6" Cable Tray	Bolted / welded	Low	Weekly Inspection
5.10 8" Cable Tray	Bolted / welded	Low	Weekly Inspection
5.11 8" Cable Tray	Bolted / clamped	Low	Weekly Inspection
5.12 8" Cable Tray	Bolted / clamped	Low	Weekly Inspection
5.13 16" Cable Tray	Bolted	Low	Weekly Inspection
5.14 Padeye - eastside - no access	Welded	Low	SI1018
5.15 Padeye - westside - no access	Welded	Low	SI1019
5.16 Padeye - eastside - no access	Welded	Low	SI1019
5.17 Skidding jack padeye - SW	Bolted	Low	Weekly Inspection
5.18 Skidding jack padeye - NW	Bolted	Low	Weekly Inspection
5.19 Bracket /Mcormey lines	Welded	Low	
5.20 1" Deluge Line	Clamped / welded	Low	Weekly Inspection
5.21 Work Platform	Bolted	Low	Weekly Inspection
5.22 Handrails	Bolted into sockets	Low	Weekly Inspection



DERRICK INVENTORY

BP FORTIES DELTA FD DDO INVENTORY

Area 4 : Top of Rig Floor Windwall to Rig Floor			
4.1 Deluge Line	Bolled Brackets	Low	Weekly Inspection
4.2 Deluge Line	Bolled Brackets	Low	Weekly Inspection
4.3 Deluge Line	Bolled Brackets	Low	Weekly Inspection
4.4 Deluge Line	Bolled Brackets	Low	Weekly Inspection
4.5 Deluge Line	Bolled Brackets	Low	Weekly Inspection
4.6 Deluge Line	Bolled Brackets	Low	Weekly Inspection
4.7 Deluge Line	Bolled Brackets	Low	Weekly Inspection
4.8 Deluge Line	Bolled Brackets	Low	Weekly Inspection
4.9 Deluge Line	Bolled Brackets	Low	Weekly Inspection
4.10 Deluge Line	Bolled Brackets	Low	Weekly Inspection
4.11 Deluge Line	Bolled Brackets	Low	Weekly Inspection
4.12 Deluge Line	Bolled Brackets	Low	Weekly Inspection
4.13 Main 4" Deluge Line	Bolled Brackets	Low	Weekly Inspection
4.14 Halogen Light	Bolled / Safety Sling	Low	Monthly PM
4.15 Halogen Light	Bolled / Safety Sling	Low	Monthly PM
4.16 Strip Light - Victor	Bolled / Safety Sling	Low	Monthly PM
4.17 Strip Light - Victor	Bolled / Safety Sling	Low	Monthly PM
4.18 Strip Light - Victor	Bolled / Safety Sling	Low	Monthly PM
4.19 Strip Light - Victor - 2'	Bolled / Safety Sling	Low	Monthly PM
4.20 Roller Door - Schumberger	Bolled	Low	Weekly inspection
4.21 16" Cable Tray	Bolled	Low	Weekly inspection
4.22 5" Cable Tray	Bolled	Low	Weekly inspection
4.23 Junction Box - Hawke	Bolled	Low	Monthly PM
4.24 Junction Box - Hawke	Bolled	Low	Monthly PM
4.25 Junction Box - Hawke	Bolled	Low	Monthly PM
4.26 Junction Box - Hawke	Bolled	Low	Monthly PM
4.27 Junction Box - Hawke	Bolled	Low	Monthly PM
4.28 8" Cable Tray	Bolled	Low	Weekly inspection
4.29 5" Cable Tray	Bolled	Low	Weekly inspection
4.30 Certified Lifting eye	Clamped	Low	Weekly Inspection
4.31 Speaker	Bolled to Uni-strut	Low	Monthly PM
4.32 Strip light - Victor	Bolled / Safety Sling	Low	Monthly PM
4.33 Emergency alarm light & guard	Bolled	Low	Monthly PM
4.34 Emergency alarm light & guard	Bolled	Low	Monthly PM
4.35 Strip Light - Victor - 4'	Bolled / Safety Sling	Low	Monthly PM
4.36 Strip light - Victor - 4'	Bolled / Safety Sling	Low	Monthly PM
4.37 Junction Box - Hawke	Bolled	Low	Monthly PM
4.38 Junction Box - Hawke	Bolled	Low	Monthly PM
4.39 8" cable tray	Bolled	Low	Weekly inspection
4.40 4" cable tray	Bolled	Low	Weekly inspection
4.41 1/2" steel airline	U-bolled	Low	Weekly inspection
4.42 1/2" steel airline	U-bolled	Low	Weekly inspection
4.43 Halogen light - Chalmir	Bolled / Safety Sling	Low	Monthly PM
4.44 1" airline	U-bolled	Low	Weekly inspection
4.45 16" Cable tray	Bolled	Low	Weekly inspection
4.46 8" cable tray	Bolled	Low	Weekly inspection
4.47 Junction Box - Hawke	Bolled	Low	Monthly PM
4.48 Junction Box - Hawke	Bolled	Low	Monthly PM
4.49 Junction Box - Hawke	Bolled	Low	Monthly PM
4.50 Junction Box - Hawke	Bolled	Low	Monthly PM
4.51 Junction Box - Hawke	Bolled	Low	Monthly PM
4.52 Strip Light	Bolled / Safety Sling	Low	Monthly PM



DERRICK INVENTORY

BP FORTIES DELTA FD DDO INVENTORY

Area 5 : Substructure			
5.23 8" Cable Tray	Bolted	Low	Weekly Inspection
5.24 8" Cable Tray	Bolted	Low	Weekly Inspection
5.25 5" to 3" Fire water ring line	Clamped / welded	Low	Weekly Inspection
5.26 Hard piped air lines	Bolted / Clamped	Low	Weekly Inspection
5.27 5' Long Ladder	Welded	Low	Weekly Inspection
5.28 8' long 6" Cable Tray	Bolted / welded	Low	Weekly Inspection
5.29 12' long 8" Cable Tray	Bolted / welded	Low	Weekly Inspection
5.30 1" Hydraulic Line	Clamped	Low	Weekly Inspection
5.31 1" Hydraulic Line	Clamped	Low	Weekly Inspection
5.32 1" Hydraulic Line	Clamped	Low	Weekly Inspection
5.33 Strip Light	Bolted	Low	Monthly PM
5.34 Junction Box	Bolted	Low	Monthly PM
5.35 8" dia 3' long Downline	Welded	Low	
5.36 8' long 16" dia flowline	Welded / bolted	Low	Weekly Inspection
5.37 8" Cable Tray	Bolted / welded	Low	Weekly Inspection
5.38 8" Cable Tray	Bolted / welded	Low	Weekly Inspection
5.39 Padeye W/N 5150 1933	Welded	Low	SI 1019
5.40 Junction Box	Bolted	Low	Monthly PM
5.41 Strip Light	Bolted	Low	Monthly PM
5.42 Junction Box	Bolted	Low	Monthly PM
5.43 5" Drain line	Welded / U-clamps	Low	Weekly Inspection
5.44 2" Angle iron - redundant	Welded	Low	
5.45 L-shaped bracket	Welded	Low	
5.46 Angle iron strut 1' long, Redundant	Welded	Low	
5.47 Substructure walkway platform	Welded	Low	Weekly Inspection
5.48 North/South Flowline	U-clamps / bolted / welded	Low	Weekly Inspection
5.49 Substructure handle	Bolted into sockets	Low	Weekly Inspection
5.50 Padeye W/N 5150 2828	Welded	Low	SI 1019
5.51 Padeye W/N 5150 2826	Welded	Low	SI 1019
5.52 Padeye W/N 5150 2826	Welded	Low	SI 1019
5.53 Padeye W/N 5150 2827	Welded	Low	SI 1019
5.54 Junction Box	Bolted	Low	Monthly PM
5.55 Strip Light	Bolted	Low	Monthly PM
5.56 Air Receiver	Bolted Clamps	Low	Monthly PM
5.57 5" Firewater line	Bolted	Low	Weekly Inspection
5.58 L-shaped bracket - redundant	Welded	Low	
5.59 North-South Catenary	Welded	Low	Monthly PM
5.60 Redundant u-shaped bracket	Welded	Low	
5.61 HP Mud Line support bracket	Welded	Low	
5.62 Mouse hole outer sleeve - N	Welded	Low	Weekly Inspection
5.63 Kelly Scabbard frames	Welded / bolted	Med	Weekly Inspection
5.64 Strip Light	bolted	Low	Monthly PM
5.65 Junction box	bolted	Low	Monthly PM
5.66 Redundant 1' long angle iron	Welded	Low	
5.67 Redundant 2' long 1" pipe	Welded	Low	
5.68 Mouse hole outer sleeve - W	welded	Low	Weekly Inspection
5.69 Strip light	bolted	Low	Monthly PM
5.70 Junction Box	bolted	Low	Monthly PM
5.71 4" HP Line	Clamped	Low	Weekly Inspection
5.72 8' long 4" Cable Tray	bolted	Low	Weekly Inspection
5.73 3' long 5" Line mud bucket return	welded	Low	Weekly Inspection
5.74 N-S Mud Flowline	bolted	Low	Weekly Inspection
5.75 E-W Mud Flowline	bolted	Low	Weekly Inspection



DERRICK INVENTORY

BP FORTIES DELTA FD DDO INVENTORY

Area 5 : Substructure			
5.76 Strip light	bolted	Low	Monthly PM
5.77 Strip Light	bolted	Low	Monthly PM
5.78 4" Hard pipe	bolted	Low	Weekly Inspection
5.78 3' long 4" Cable Tray	bolted	Low	Weekly Inspection
5.80 Work platform	welded	Low	Weekly Inspection
5.81 Access Ladder	welded / bolted	Low	Weekly Inspection
5.82 Strip Light	bolted	Low	Monthly PM
5.83 Strip Light	bolted	Low	Monthly PM
5.84 Redundant 1.5' long angle iron	Welded	Low	
5.85 7' long 6" cable tray	Bolted	Low	Weekly Inspection
5.86 12' long 6" cable tray	Bolted / welded	Low	Weekly Inspection
5.87 Junction box	bolted	Low	Monthly PM
5.88 6" cable tray	bolted	Low	Weekly Inspection
5.89 6" cable tray	bolted	Low	Weekly Inspection
5.90 HP Mud line	Clamped	Low	Weekly Inspection
5.91 HP Mud line	Clamped	Low	Weekly Inspection
5.92 4" Mud line	Clamped	Low	Weekly Inspection
5.93 Drain line	Bolted brackets	Low	Weekly Inspection
5.94 18" cable tray	Bolted	Low	Weekly Inspection
5.95 15" cable tray	bolted	Low	Weekly Inspection
5.96 4" water line - hard pipe	U-clamped	Low	Weekly Inspection
5.97 4" water line - hard pipe	U-clamped	Low	Weekly Inspection
5.98 2 x Redundant u-beams	Bolted	Low	Weekly Inspection
5.99 Rig skidding pads	Welded	Low	SI 1019
5.100 Rig skidding pads	Welded	Low	SI 1019
5.101 D'works cooling package	Bolted to welded substructure	Low	Monthly PM
5.102 Cooling water tank	Welded	Low	
5.103 4" cable tray	Bolted	Low	Weekly Inspection
5.104 Strip light	Bolted	Low	Monthly PM
5.105 Junction box	Bolted	Low	Monthly PM
5.106 16" cable tray	Bolted	Low	Weekly Inspection
5.107 16" cable tray	Bolted	Low	Weekly Inspection
5.108 4" Cable Tray	Bolted	Low	Weekly Inspection
5.109 D'works Cooling Pipework	Bolted / clamped / welded	Low	Weekly Inspection
Area 8: Travelling Equipment			
6.1 Swivel - National P400	Bolts & Shackles	Med	Monthly PM
6.2 Kelly Sonner - Varco	Bolts & Shackles	Med	Monthly PM
6.3 Kelly Bushing - Varco	Pins & Rollers	Med	Monthly PM
6.4 Travelling Block - National	Bolts & Pins	Med	Monthly PM