

Experience transfer Falling Tubular

Blohm & Voss SDS elevator



Incidents with the SDS elevator

- Statoil has had two serious incidents involving the B&V SDS elevator
 - One in 2007 and one in 2009
- In both cases the elevator, for some reason was installed with the opening facing downwards, it should always be installed facing upwards (latching on in an upwards movement, because the load should rest on the elevator body not the door)
- In both cases the elevator was not properly latched, the securing device could still be installed due to wear, and of course failed due to the load
- Extensive damage to the drillers cabin in 2007, 48 hrs downtime to repair damages to the Catwalk machine in 2009
- B+V issued a Product update notification, with modifications to the latch securing device on these elevators in 2007
 - The elevator involved in the 2009 incident was **not** modified

2007: the drillers fast reaction saved his life, when the 30" conductor came falling through the roof



B+V Product Update Notification

Product Update Notification Of Side Door Elevators

No: 2007-07
Date: July 2007



Subject: SDS Elevator for One Hand Operation

Purpose: To inform the Industry about the procedure for proper operation of below listed SDS Elevators

This procedure is valid for all SDS Elevator with "One Hand" opening design which has been modified with below listed Safety Kit.

SDS-Elevator and Safety Kit numbers:

Elevator SDS "One Hand"	Safety Kit P/N
SDS 250 Frame 6 642 620	642620-2
SDS 350 Frame 2 643 520	643520-2
SDS 350 Frame 5 643 580	643580-2
SDS 500 645 500	645500-2

Safety Kit consists of: Main Parts

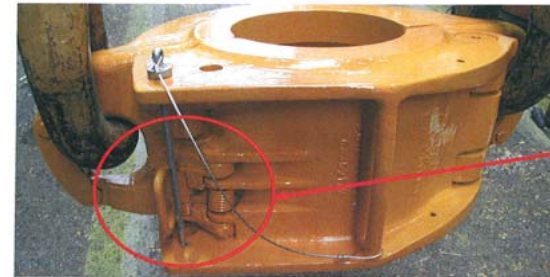
- New Latch
- Safety Pin Assembly
- Locking Plate
- Spring

Product Update Notification Of Side Door Elevators

No: 2007-07
Date: July 2007



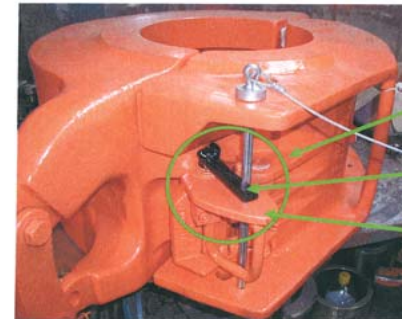
Old Design



Old Design

picture 1: Existing Side Door Elevator

New Design



New Design

Locking plate

New Latch
including wider
upper plate

picture 2: Side Door Elevator safety improvement

B+V Product Update Notification

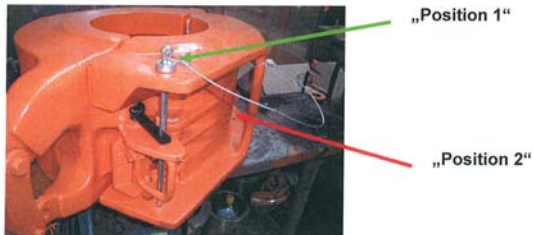
Product Update Notification Of Side Door Elevators

No: 2007-07
Date: July 2007



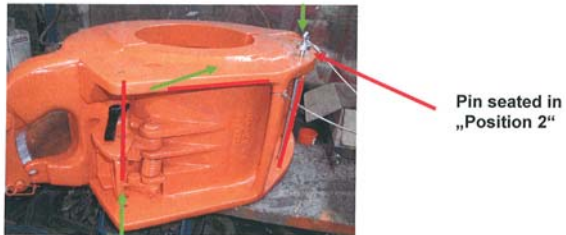
Procedure for Operation

1. The Elevator is Closed and the Safety Pin is in „Position 1“



picture 3: Pin in save position

2. Remove the Safety Pin from the „Position 1“ and put it into the „Position 2“(parking position), open the Elevator



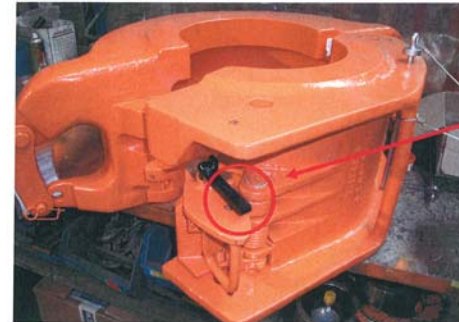
picture 4: Move Pin to parking position

Product Update Notification Of Side Door Elevators

No: 2007-07
Date: July 2007



3. Open the Elevator. Remove from Pipe



picture 5: Elevator open

4. Put Pipe in, Close the Elevator.



picture 6: Elevator closed, but not secured

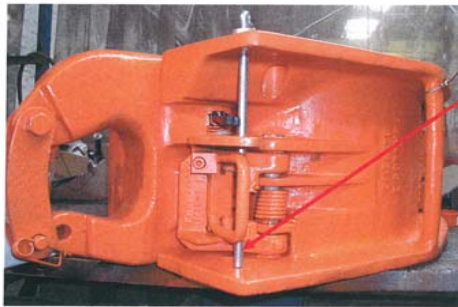
B+V Product Update Notification

Product Update Notification Of Side Door Elevators

No: 2007-07
Date: July 2007



5. Remove the Safety Pin from „Position 2“ to „Position 1“
If the Latch is not properly locked, the Pin can not be set!



picture 7: Elevator properly closed Pin in save position

„Position 1“

Product Update Notification Of Side Door Elevators

No: 2007-07
Date: July 2007



Safety Pin can not be set, when the Elevator is not properly latched



picture 8 Safety Pin can not be set, while plate is locking the hole

Plate is locking
Hole to set Pin

Production and Service Stocking and Service		Stocking and Service	Stocking and Service
 <p>Head Office Hamburg/Germany</p> <p>Blohm + Voss Repair GmbH Hansens-Blohm-Straße 2 20457 Hamburg, Germany Phone: +49-40-31 19-81 42 Fax: +49-40-31 19-81 02 E-mail: info@blohm+vosso.com</p>	<p>Houston, Texas/USA</p> <p>Gray EDI, Inc. P. O. Box 73485 Houston, Texas 77279-0485 United States of America Phone: +1-713-66 20 366 Fax: +1-713-66 22 807 E-mail: Grayedi@net</p>	<p>Singapore/Republic of Singapore</p> <p>Premier Sea & Land Pte. Ltd. 1, Scotts Road #19-12 Shaw Centre Singapore 22008 Republic of Singapore Phone: +65-734-11 77 Fax: +65-734-91 15 E-mail: ron@de@premier-ips.com.sg</p>	<p>Aberdeen/ United Kingdom</p> <p>Stacey Oil Services Ltd. Unit A1, Sainsbury Crescent Furthelen, Aberdeen AB12 4YD United Kingdom Phone: +44-12 24-78 18 87 Fax: +44-12 24-78 21 62 E-mail: mail@staceyoil.com</p>

A large offshore oil rig is shown in the middle of the ocean under a grey, overcast sky. The sea is dark blue with white-capped waves. In the foreground, a platform with blue railings has several workers in orange safety suits and white hard hats. A large crane structure extends from the rig towards the sky. The rig itself is a complex of metal structures, pipes, and platforms.

Thank you

Presentation title

Presenters name

Presenters title

E-mail address, tel: +47 51 99 00 00

www.statoil.com