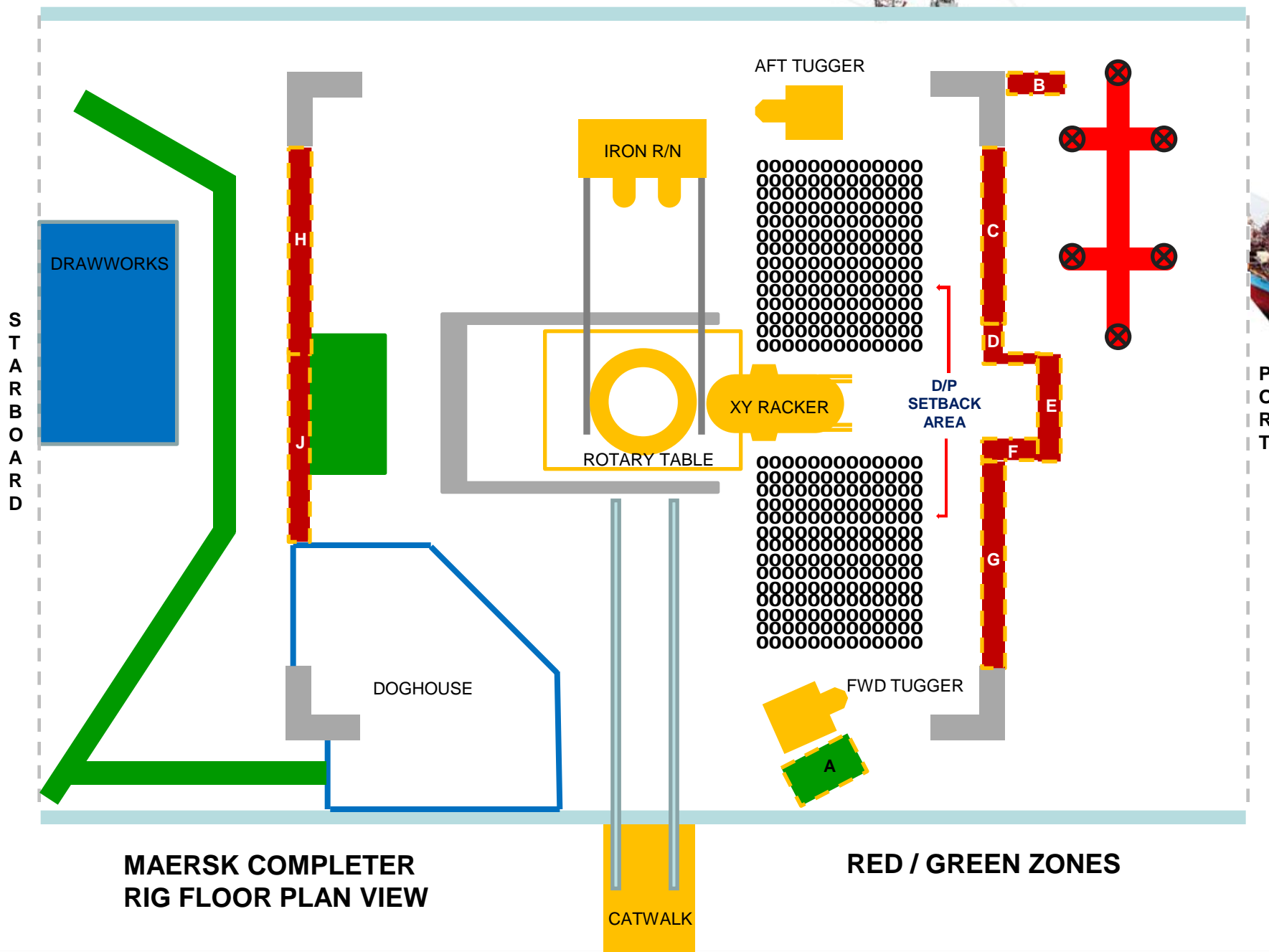


Maersk Completer



DROPs – Best Practice



MAERSK COMPLETER
RIG FLOOR PLAN VIEW

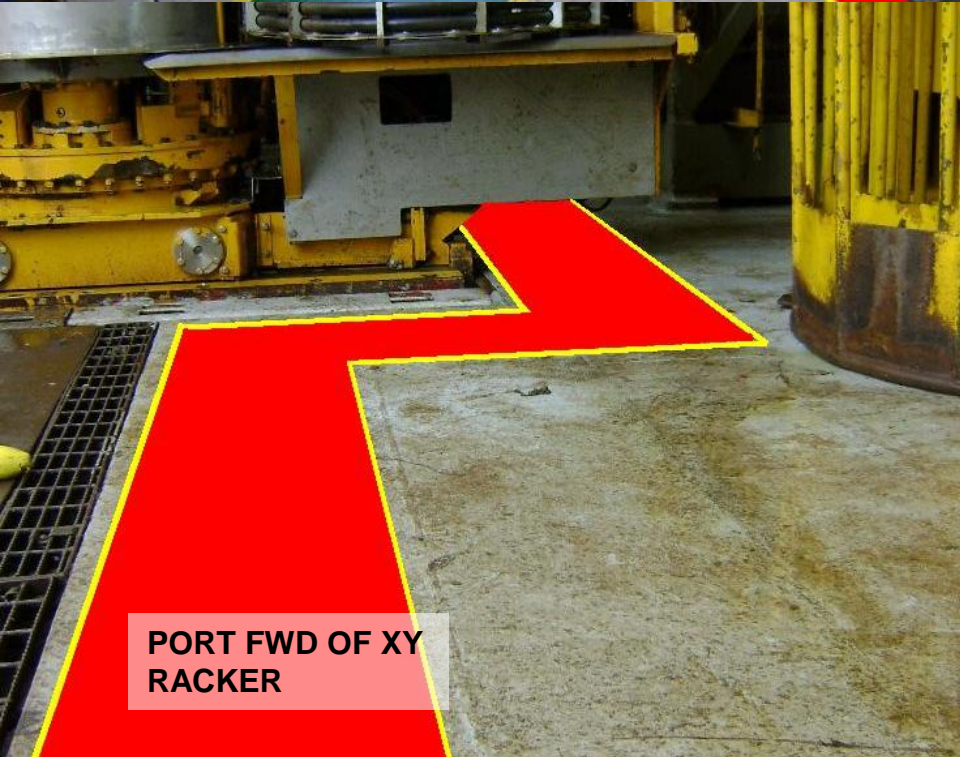
RED / GREEN ZONES



FROM STBD RIG FLOOR
ACCESS



PORT AFT OF XY
RACKER



PORT FWD OF XY
RACKER



PORT FWD
AIR TUGGER

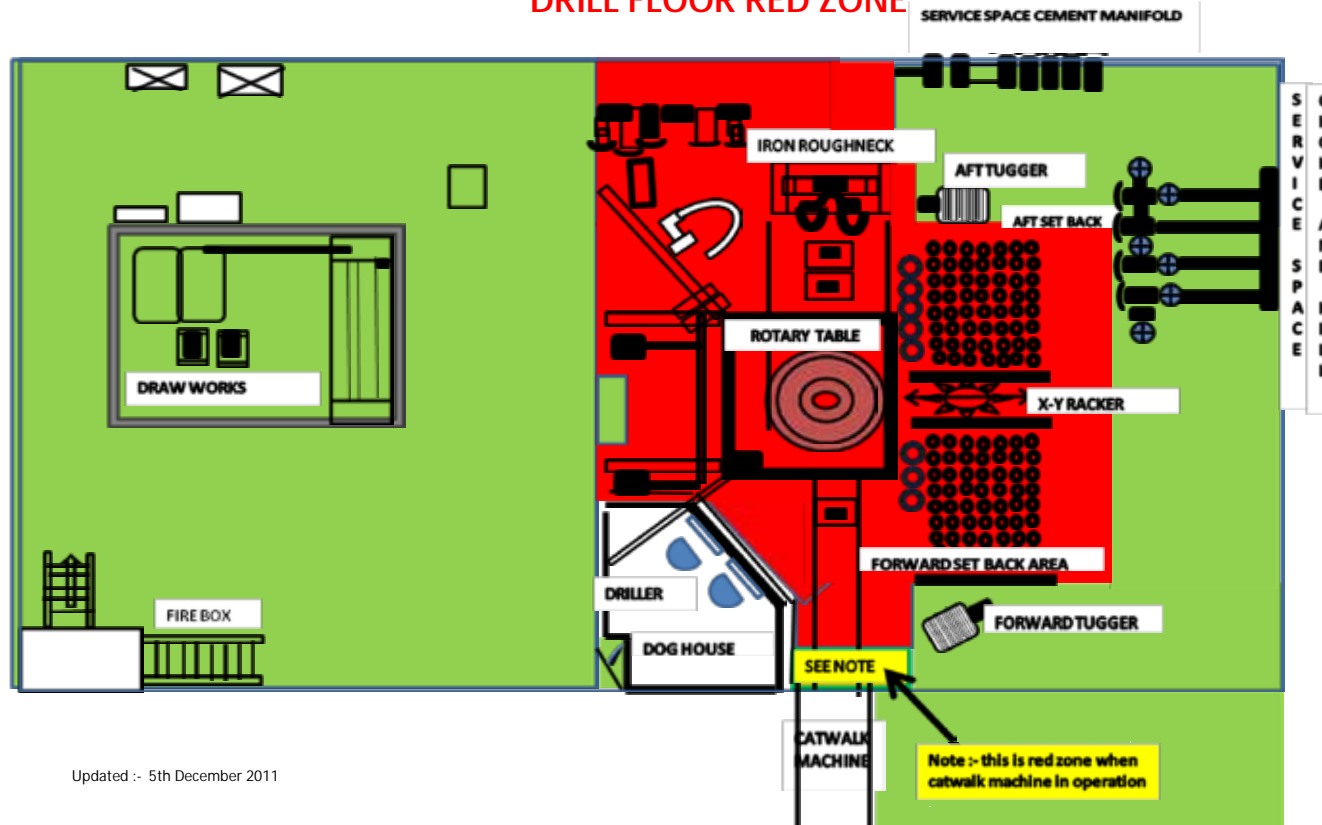


RED ZONE POLICY

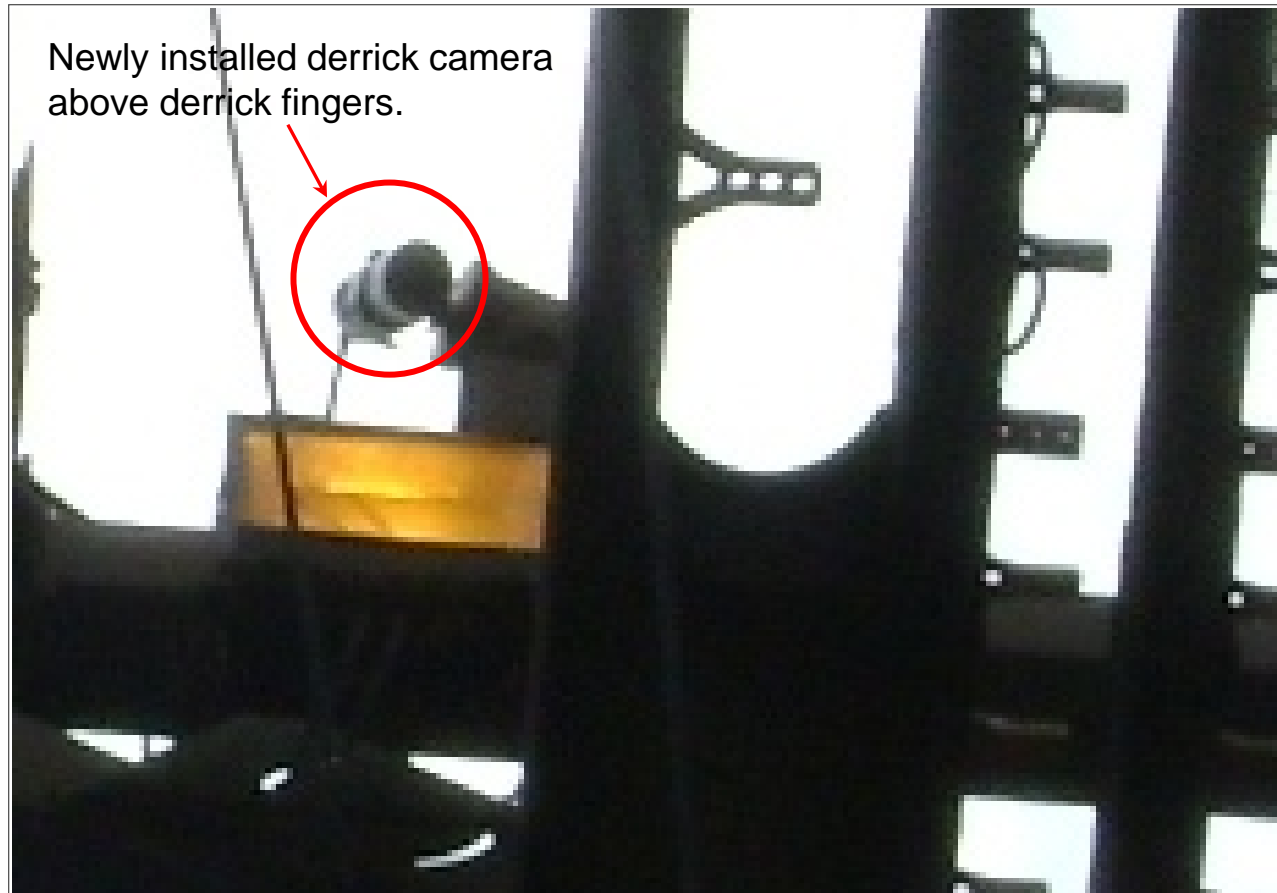
1. Access to the RED ZONE is strictly controlled and only for experienced essential crew with express permission of the Driller
2. Have the number of individuals involved in task been reduced to the minimum to achieve the goal in the RED ZONE
3. Are you aware of the hazards in the RED ZONE
4. Are the risk factors for working in the RED ZONE addressed in the pre-job meeting / toolbox talk
5. Can the work practically be performed without entering the RED ZONE

REFER TO PROCESS INSTRUCTION 18087 for full RED ZONE POLICY

DRILL FLOOR RED ZONE



Updated :- 5th December 2011



Newly installed derrick camera
above derrick fingers.





Pipe Wash & Dope Tool by



The high level of safety in today's drilling operations around the world requires special attention to equipment. Most drilling rigs have fully automated derrick and pipe handling systems.

In some countries the legislation prohibits personnel to work on the drill floor while the automatic pipe handling machines are in use. But still we experience personnel using HP cleaners and manual dope brushes when Drill Pipe and other tubulars are cleaned and doped prior connection.

In order to prevent this from happening we have developed the Pipe Wash & Dope Tool. Utilizing the Pipe Wash & Dope Tool the tubulars will become high pressure cleaned and doped without exposing personnel to danger of dropped objects or working close to remote operated machines on Drill floor (Red Zone).

The Pipe Wash & Dope Tool cleans and dopes DP and DC with an outside diameter of 2 7/8" to 9" using high pressure water in very limited volumes.

How does the Pipe Wash & Dope Tool work? The pipe is lowered down into the tool by means of the pipe handler. When the pipe reaches the bottom the treads and inside tool joint is cleaned by means of HP water and air. After a few seconds the pipe can be pulled upwards and threads is applied with a thin layer of dope.

To ensure maximum performance the tool needs supply of HP water (175-200 bars at 60 °C) and control air of 6 to 10 bar. Rigtools can deliver HP Hot Wash unit RT-EX100 fit for purpose.

In cold conditions we recommend to preheat the dope to ensure perfect layer on threads. Rigtools supplies heating box.

Pipe Wash & Dope Tool is fully certified for offshore conditions. Following certificates within compliance:

- NORSOK
- CE- Certification
- Material certificates
- Welding certificates

Pipe Wash & Dope Tool highlights:

- Improves safety on drill floor.
- No personnel in drop zone while tripping in hole.
- Easy to install on the drill floor.
- Fits all drill floor applications. Can be used with all types of pipe handling equipment.
- Ensures proper cleaning and doping of threads.
- No over torque connections - Dope applied on clean dry threads.
- No plugged MWD's or turbines. The tool cleans inside the pipe and removes any wood debris etc. from setback area
- Releases human resources.
- Not using iron roughneck time (as when pipe doper is installed on iron roughneck



For further information please contact Rigtools at Info@rigtools.net or consult our webside www.rigtools.net





Yellow and Black means the barrier can be crossed with caution if the way is clear.



Red and white means do not enter if you are not part of the work group. There may be dangers you cannot see.





A.P. MOLLER - MAERSK GROUP

Maersk Completer



After an incident report regarding a lifting operation which resulted in a fatality was mentioned at a pre-tour meeting, George Luchang, a roustabout, realised that a similar condition existed in the sack room of the rig. To confirm his concerns, he went to the sack room and saw that the landing area was indeed similar. His immediate action was to then record this together with his proposal to have the landing area painted and designated as a "No Go Area/Red Zone" as well as discussed the matter with the onboard STO. Immediate follow-up action was taken and the area painted red.

Incident in mention happened on the Vantage Drilling drillship, the Platinum Explorer on the 31st Jan 2011.



Safety Incident Report

Name: Sack Passon Date: 17/1/11 Job No: 0245

Observation Report: ☒ Unsafe Condition: ☐
Propose Improvement: ☐ Unsafe Act: ☐
Near Miss: ☐

Was job stopped due to unsafe act or unsafe condition? ☐

Description of Observation:
I would like to propose that we
paint white/red stripes in sack room
along the hand rail on the
floor - NO ON AREA. This would
help us to avoid the hazard
created when we are loading,
unloading chemical pellets into the
containers with crane in operation.

Please refer to PLATINUM EXPLORER

When we have observed 'Unsafe Act' or 'At Risk Behaviours' we need to have two way feedback with the person's observed.

Description of Action Taken / Proposed:

T: FATAL INCIDENT ~ 31 January 2011

Name: GEORGE Department / Company: P.M

George Luchang
Roustabout

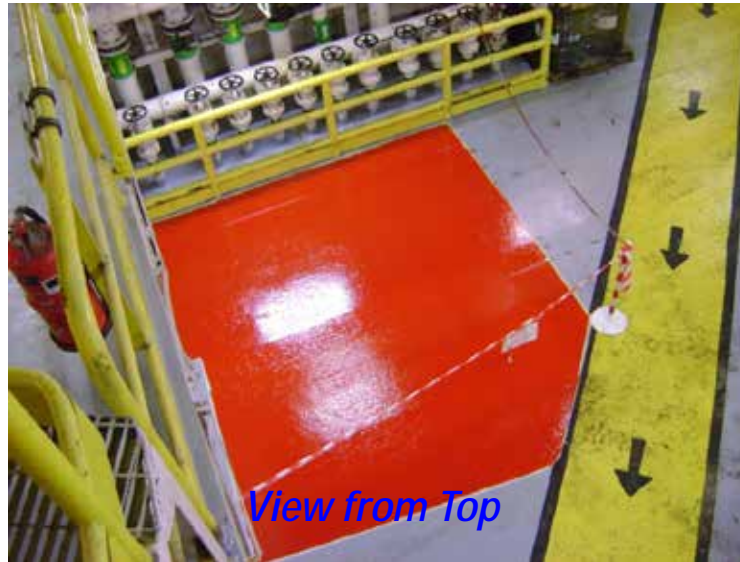


MAERSK DRILLING



Maersk Completer

Landing area in sack room painted red and is now a designated "No Go Area/Red Zone".



View from Top



Side View



Front View

LER-MAERSK



Maersk Completer

Weekly Improvement Week 01-2012



Red Zone area around the
workboat platform area



Rescue Boat is placed on top of Stbd fan house in a narrow space and it was decided that the risk of having crew in the same area created a potential for being crushed. Therefore to avoid having to be in the area when the FRC was hoisted or lowered to and from the cradle the black lines were painted on the hull so the Banksman and slingers could position the load from deck. To ensure no one in the future is in the area during lifting operation it was decided to make it fan house roof a red zone.



Black strap
marking on the
workboat





Maersk Completer 15K Hydril B.O.P.



- Dedicated work platform at each level of the B.O.P.
- Hand rails at each level
- Safe access ladder
- 4 harnesses located below the rig floor on inertia reels for working at height on the BOP
- Note:- Occasionally a section of hand rail may need to be removed to facilitate rig up and down of Choke, Kill and Service lines. The hand rails are located in sockets and secured with Nylok nuts and bolts to prevent them becoming DROPPED objects.



Maersk Completer 15K Hydril B.O.P.

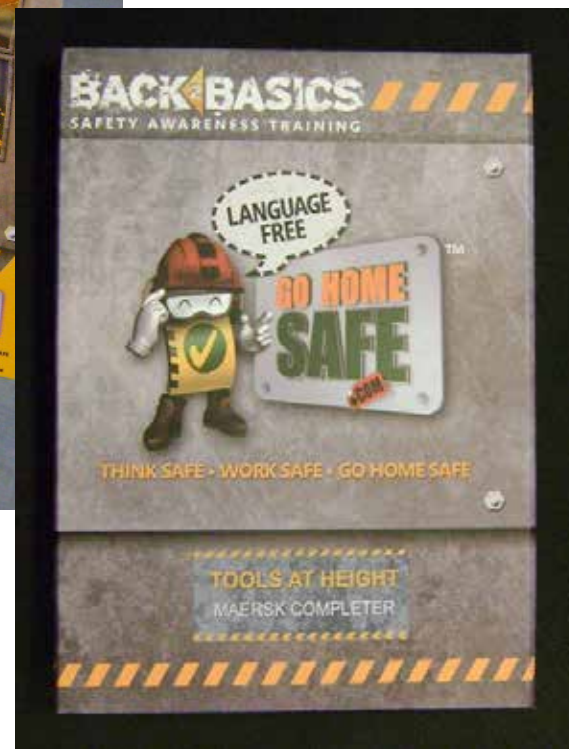


- Dedicated work platform at each level of the B.O.P.
- Hand rails at each level
- Safe access ladder
- 4 harnesses located below the rig floor on inertia reels for working at height on the BOP
- Kick plates fitted for DROPS prevention
- Note:- Occasionally a section of hand rail may need to be removed to facilitate rig up and down of Choke, Kill and Service lines. The hand rails are located in sockets and secured with Nylok nuts and bolts to prevent them becoming DROPPED objects.



Tethered Tools for Working Aloft







DROPS!

What did I do to prevent one on the Maersk Completer today?

DROPS!

Apakah tindakan saya untuk mengelakkan nya dari berlaku di Maersk Completer pada hari ini?



Thank you for your attention

Any questions?